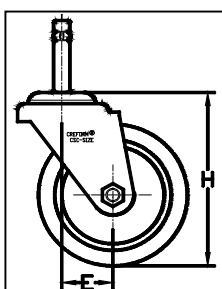




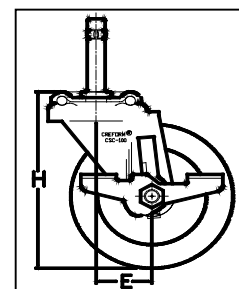
CREFORM STEM CASTERS

CSC casters are designed for our 28mm pipe. These casters are installed by first tapping a plastic receiver into the pipe end using a mallet. With the receiver installed, the CSC caster may be inserted by pushing stem into the receiver until bottomed.

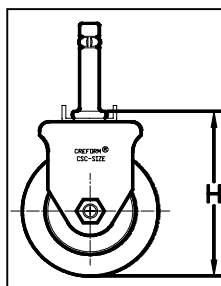
Suffixes: S = with stop F = fixed U = urethane. Dimensions are in mm unless otherwise noted.



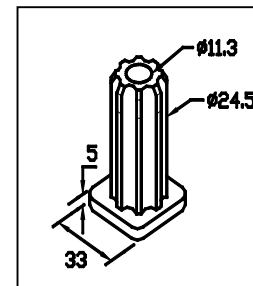
CSC (Swivel)



CSC-S (Swivel with Stop)



CSC-F (Fixed)



CSC-128 (Stem Receiver)

Type of Caster & Diameter	Part Number Polyurethane Tire	Capacity Limit*		Swivel Radius E (mm)	Height H (mm)	Height to Pipe End (mm)
		Kgs.	Lbs.			
Swivel 50 (2")	CSC-50U	34	75	21	64	69
Swivel w/ Stop 50 (2")	CSC-50SU	34	75	21	64	69
Swivel 75 (3")	CSC-75U	102	225	30	99	104
Swivel w/ Stop 75 (3")	CSC-75SU	102	225	30	99	104
Fixed 75 (3")	CSC-75FU	102	225	n/a	99	104
Swivel 100 (4")	CSC-100U	125	275	35	124	129
Swivel w/ Stop 100 (4")	CSC-100SU	125	275	35	124	129
Fixed 100 (4")	CSC-100FU	125	275	n/a	124	129
Stem Receiver, Plastic	CSC-128**	Included with each CSC-series caster & available separately				

* Capacity limit is per wheel.

**Minimum Pipe length for stem receiver is 70mm

General Caster Features

Bearing molded into wheel for true rolling
Urethane tires for low rolling resistance, resistance to flat spotting, and non-marking characteristics
180° F Temperature Limit

Not suitable for ESD applications
Does not require any special tools for installation